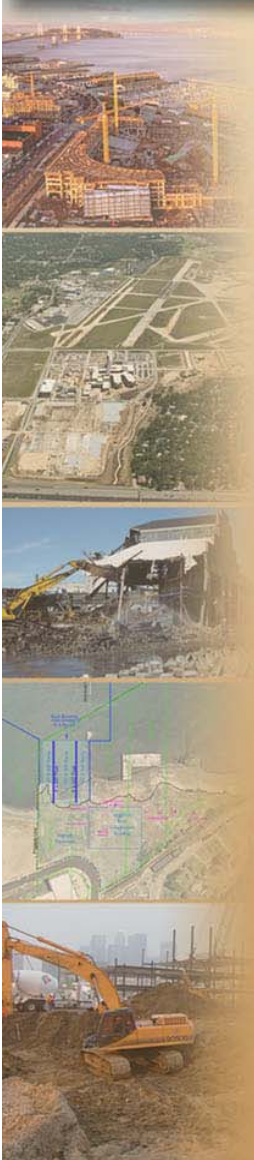




Sweetgrass Development Brownfields Assessment Program



General Brownfields Information

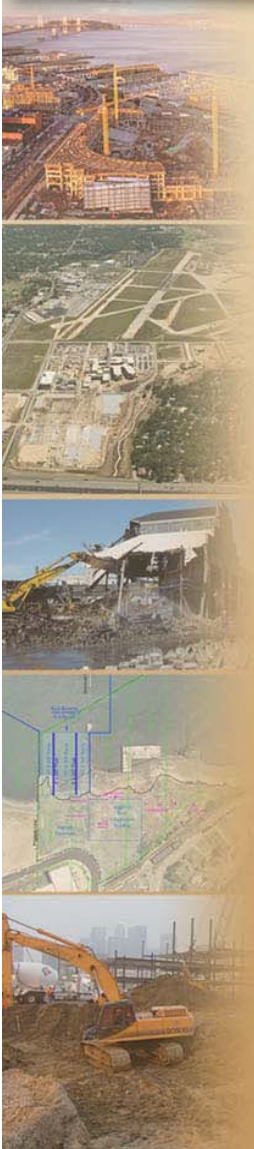
What is a Brownfield site?

Brownfield sites are abandoned, idled, or underused industrial and commercial properties where expansion or redevelopment is complicated by real or perceived environmental contamination.



Potentially Eligible Sites


- Gas Stations
- Dry Cleaners
- Bulk Petroleum Facilities
- Wood Treatment Facilities
- Abandoned Landfills
- Pipeline Releases
- Asbestos Contaminated Buildings
- Lead-Based Paint Contaminated Sites
- Any site where there is a real or perceived contamination problem



Brownfields Assistance

- **EPA Assessment Grants (petroleum and hazardous substance), up to \$400,000**
- EPA Cleanup Grants (RLF and Cleanup), up to a \$1,000,000
- DNRC Planning Grants (up to \$50,000)
- DNRC Implementation Grants (up to \$500,000)
- State Petroleum Fund
- Targeted Brownfields Assessments (site-specific)

Grant Awards



- MT Department of Natural Resources and Conservation Planning Grant awarded to the City of Shelby in June 2013 for \$24,915

- Public meetings held throughout Sweetgrass region
- Initial site inventory developed

- US Environmental Protection Agency Brownfields Assessment Grant awarded to Sweetgrass in September 2015 for \$400,000

- \$200,000 Hazardous Substance
- \$200,000 Petroleum

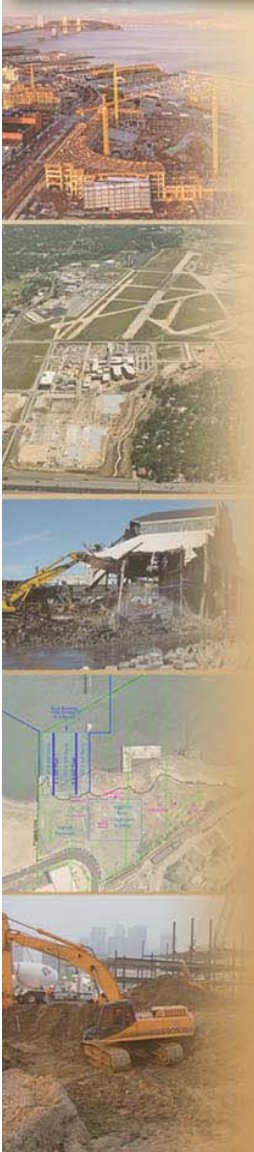
Site Selection

- Site Inventory

- Initial site inventory from 2014
- Continual public and landowner outreach to add to site inventory

- Site Selection

- Site Eligibility
- Landowner Participation
- Redevelopment Potential
- Sweetgrass Brownfields Steering Committee approval

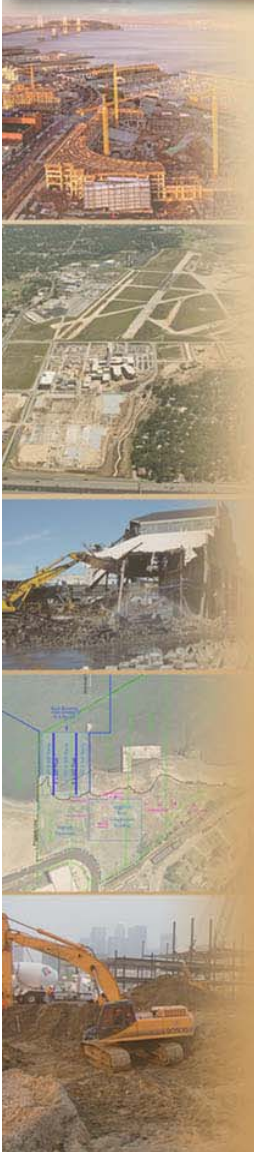


Benefits of Participating in the Program

- Program is voluntary (i.e. non-regulatory)
- Assessments completed at no cost to the owner
- All data and reports are provided to the owner
- Owner can use funds to satisfy regulatory agency requirements or to finalize property sale and/or satisfy lender requirements
- Funds can be used to address community concerns

Assessment Process

- Landowner agreements (participation & access)
- EPA & DEQ Eligibility Approval
- Phase I Assessment
- Phase II Assessment (as needed)
- Cleanup Planning (as needed)



Grant Goals

- Community Outreach
 - Public meetings
 - Marketing materials
 - Landowner outreach
- Assessments
 - 12 Phase I assessments
 - 9 Phase II assessments



Brownfield Program Contact

Ms. Sarah Converse
Executive Director
Sweetgrass Development
(406) 727-5173
sweetgrassdevelopment@gmail.com

